

2023

LARAMIE COUNTY COMMUNITY COLLEGE FOUNDATION

ANNUAL REPORT



LARAMIE COUNTY
COMMUNITY COLLEGE
FOUNDATION



OUR MISSION:

ENGAGE OUR COMMUNITY AND SUPPORT LCCC.

Established in 1968, the Laramie County Community College Foundation exists to develop and sustain support for Laramie County Community College through solicitation, management and recognition of donations.

The Foundation is dedicated to providing services and assistance to students, faculty, staff and the community, thereby enhancing a sense of tradition and pride in the college. Though it is separate from the college, the Foundation works closely with the college to generate private gifts for the college's major fund-raising priorities. In addition to raising money effectively, the Foundation provides careful management of funds already raised.

With the assistance of the Wyoming State Legislature's challenge grant program which began in 2004 the LCCC Foundation has been able to match more than \$9,000,000.00 in donor gifts. These generous gifts dedicated to helping our students achieve academic success have brought the Foundation's total endowment up to more than \$50 million.

Cover photo: Laramie County Community College students laugh as they share their thoughts during a question-and-answer session. The session was featured as part of the LCCC Foundation's annual scholarship luncheon, which gives Foundation scholarship recipients a chance to connect with their donors.

Inside cover: The Board of Trustees for Laramie County Community College and other dignitaries break ground on the new Blue Federal Credit Union Recreation & Athletics Complex. The renovation of the building addressed critical needs in the facility, such as upgrading electrical and HVAC, while also revising the layout and use of the spaces.

MESSAGE FROM THE CHAIR



As I enter my term as President of the LCCC Foundation Board of Directors, I want to first thank our past president Billie Addleman for his hard work, dedication and commitment to LCCC. Billie has left a lasting legacy at LCCC. As I step into the role, I am energized and excited to be leading a highly engaged team focused on the vision of creating the community college of choice. LCCC continues to be a bright spot in our community – serving our students as they work to achieve academic success and providing our community members with lifelong learning and engagement opportunities.

The mission of the LCCC Foundation is to Engage our Community and Support LCCC. During my time on the board and as a community member, I have witnessed the growth and success of LCCC. I could not be prouder to be part of the LCCC community and serve the LCCC Foundation in this role.

One of my favorite aspects of LCCC is to hear the stories of success, engagement and progress. In our annual report (we hope you enjoy the new look!), you will have an opportunity to hear the stories of those who have been impacted by work being done at our community's college. You will learn about students who have benefited from the academic opportunities provided at the college. You will hear about the donors who have committed their time and finances to support the students and programs at LCCC. And you will learn about the LCCC Foundation – our Board, our work, our impact and our commitment to the College.

We want to thank all the contributors who have given time and financial support to LCCC. Your donations continue to create greater opportunities for students and help us meet the vision of the LCCC Foundation: To Become the Community College of Choice. With your continued support we are able to provide scholarships, assist with programmatic growth, provide our students and community with a variety of cultural and community enrichment events and so much more. You are a huge part of our success and we thank you for helping make LCCC and the LCCC Foundation what we are today.

We invite you to join us on campus – come see the changes that have taken place over the years, come see the impact you are helping us make, and come see how bright our future is.

On behalf of the LCCC Board of Directors, thank you and Go Eagles!

A handwritten signature in black ink, appearing to read 'Mark Stege'.

Mark Stege
President, LCCC Foundation Board of Directors

A YEAR IN REVIEW



Thank you! Each year I continued to be amazed by the generous support and contributions we receive from friends, alumni, our college community and many others! The LCCC Foundation could not provide the support we do to our students and programs at LCCC without all of you. As we look back at 2023, we reflect and celebrate student success, new partnerships and longtime friends and supporters.

We hope you enjoy reading about how you continue to help us transform student's lives in our 2023 Annual Report and we hope you enjoy the new look of the report, too. It is with great pleasure and pride that we share stories of impact and generosity with you, while also taking time to celebrate programs, scholarships and opportunities that have and continue to make an impact on our students and the entire LCCC community. We also have included for you a financial overview, showcasing the impact you have helped make. In 2023, the LCCC Foundation allocated \$1,753,503 to support scholarships, programs, cultural events and more at LCCC and this would not be possible without all of you.

As you explore our annual report you may notice a few changes. As we entered 2024, we "refreshed" the LCCC Foundation's logo and overall look for the marketing and engagement materials. While our logo and the design of our materials may have a new feel, the service and commitment to supporting our college has not changed. We continue to offer our friends, supporters and community the opportunity to engage in meaningful experiences with LCCC.

A few highlights from the LCCC Foundation:

- Our endowment reached a new high at \$52,697,205.
- We allocated \$974,497 in scholarship support for the academic year 2023-24.
- We received a Partnership Grant from Union Pacific Railroad for \$300,000 to support the welding and diesel programs at LCCC.
- We achieved our fundraising goal to commit \$3,000,000 in support of the renovation and expansion of the Blue Federal Credit Union Recreation & Athletics Complex.
- Our annual scholarship luncheon saw our largest attendance in recent years with more than 100 LCCC Foundation scholarship recipients attending.
- With the support of a grant from the Windy Ridge Foundation, we helped launch a new mobile STEM Lab for our students and community.
- And so much more!

Thank you for your support and for helping us achieve the mission of the LCCC Foundation – to Engage our Community and Support LCCC. We hope that you will join us on campus to interact with our students and see the amazing work taking place that you have contributed to.

With gratitude,

Lisa Trimble
Vice President of Advancement

FOUNDATION

BOARD OFFICERS



MARK STEGE,
President
Retired,
Black Hills Energy



DERSHIE BARBER,
Vice President
Senior VP Trust Officer,
Wyoming Bank & Trust



BARRY SIMS,
Treasurer
Retired,
CEO Taco Johns



STEPHANIE MEISNER-MAGGARD,
Secretary
Senior Marketing Specialist,
Public Knowledge



BILLIE ADDLEMAN,
Past President
Attorney,
Hirst Applegate



DR. JOE SCHAFER,
LCCC President

BOARD MEMBERS



Dr. Kelly Binding
Dentist, First Steps Pediatric
Dentistry



Jera Likely
Project Engineer,
Martin/Martin Wyoming



Danielle Opp
Program Director,
Health Sciences, LCCC



Jeff Collins
Retired,
Union Pacific RR



Stacy Maestas
Registrar, LCCC



Cindy Pomeroy
Community Volunteer



Don Day Jr.
President-Meteorologist,
DayWeather



Byron (Buck) McVeigh
Retired, State of Wyoming



Matt Pope
President,
First Interstate Bank



Jeri Griego
LCCC Retiree



Scott Meier
Attorney



Wendy Soto
LCCC Trustee



Anna Marie Hales
Emeritus Board Member
Community Volunteer



Carol Merrell
LCCC Trustee



Dr. Sandra Surbrugg
Dermatologist,
Cheyenne Skin Clinic



Don Heiduck
U.S. Marshal Federal District Court
Security Officer



Mel Muldrow
Muldrow Consulting, LLC Owner/
Executive Project Manager



Sam Weinstein
Development Loan Officer,
Wyoming Smart Capital



Jess Ketcham
LCCC Trustee

REWARDING COMMITMENT

STALCUP AWARD

recognizes extraordinary LCCC students



JAN AND W.M. STALCUP have always placed education at the core of their lives. With a familial lineage steeped in teaching, coupled with personal experiences in academia and witnessing the positive impact of a degree on individuals, the Stalcups ardently advocate for the profound transformative power of education.

They are the namesake of the Jan and W.M. Stalcup Excellence Award, an honor to recognize a Laramie County Community College student each year “...who has gone above and beyond by engaging in the LCCC community” and stipulating that “(t)he award should not be based solely on grades but by a commitment the student made in service to the College or the Cheyenne community.”

Over the last decade, a student graduating during the spring semester has been selected to receive a cash award with no stipulations attached. In that time, the awarded has given more than \$40,000 to recipients.

“We wanted to leave it open-ended, and it’s been really fun to meet and talk to these recipients to find out how they’re going to use the money,” Jan said.

One student used the funds to replace the heater in his vehicle so he could commute between Cheyenne and Laramie and attend the University of Wyoming. Another bought a horse trailer for her children who were in 4-H.

Whatever the students do to improve their lives, the Stalcups believe the recipients have earned the help.

“It’s rewarding them for their hard work academically, what they did as part of the LCCC community, and for how they were involved in the Cheyenne community, as well,” Jan said.

A selection committee consisting of LCCC faculty members determines who the recipient will be each year. Jan and W.M. said they have

full confidence in the committee to make their selections with thoughtful consideration of the award’s intent. The committee members are Dr. Kari Brown-Herbst, Academic Affairs senior vice president, and Dr. Melissa Stutz, Student Services senior vice president.

“We don’t have any input, and they just do a stellar job in evaluating the candidates that are put forward,” W.M. said.

The Stalcups came to Cheyenne around 1992 to relocate a company from South Florida. That company was called SafeCard Services, Inc., and its employees included many who received job training at LCCC.

“It was a huge undertaking, and LCCC helped in the training of an estimated 150-200 people who we hired,” W.M. said.

SafeCard Services’ relocation to Cheyenne made a significant contribution to the local economy. W.M. said LCCC helped make that opportunity for Cheyenne residents possible.

“LCCC was critical in bringing those people up to speed,” he said.

Jan, hailing from Lawrence, Kansas, spent 11 years in the Shawnee Mission School District in Kansas, where she taught elementary students, leaving an indelible mark on their educational experiences. After moving to Cheyenne, Jan spent 12 years on the Laramie County School District 1 Board of Trustees, chairing the board for eight years. In all her years as an educator and elected official, Jan said she was focused on helping students from all backgrounds.

With those experiences, the Stalcups know how education can transform lives, and how much financial assistance can help students. Each year’s recipient is a validation of the award’s importance.

“We’re always in awe of the students who are selected,” Jan said.





FROM DOUBT TO DEDICATION

STALCUP WINNER WOVEN INTO LCCC'S FABRIC

GEORGE JANKOWSKI was convinced he wasn't smart enough for college when he finished high school. But by the time he made his way to Laramie County Community College, he knew he'd found a way to make a positive change in his life with higher education.

Jankowski was a nontraditional student, coming to LCCC in his 30s after service in the U.S. Air Force. It wasn't his first attempt at college, and his previous experience left him uncertain whether pursuing a degree was the right decision. When he arrived at LCCC, however, Jankowski said he could tell there was something different.

"The friendly demeanor among the staff and faculty made me feel comfortable, and the smaller class sizes definitely made my instructors more accessible; it was easy for me to talk to them," he said. "Every faculty member I met made me feel welcome and didn't make me feel stupid for asking questions."

Whether he needed to meet his advisor or support from the Office of Student Accommodations, Jankowski said he always felt like an important part of the LCCC community.

"Everyone here always encouraged me, and knew I could graduate, and treated me like a person, not just a number," he said.

In May 2021, Jankowski earned an associate of arts degree in social sciences. Laura Hayes, a faculty member at LCCC, acknowledged not only Jankowski's triumph over academic challenges but also his noteworthy contributions to the community through dedicated community service. Throughout his time at LCCC, Jankowski actively participated in various student groups, including Phi Theta Kappa, the Student Veteran's Association, and the Student Alliance for Equality (SAFE).

Hayes nominated Jankowski for the 2021 Jan & W.M. Stalcup Student Excellence Award, a recognition of outstanding achievement and character made possible by the LCCC Foundation. The cash award is given to one graduating LCCC student each spring who has gone above and beyond their classroom obligations to volunteer and engage with the LCCC and Laramie County community.

After donating some of his cash award to the Cheyenne Animal Shelter and veterans organizations, Jankowski said he took himself on a small vacation.

LCCC graduate George Jankowski was the winner of the Jan and W.M. Stalcup Student Excellence Award in 2021. Jankowski now works at LCCC.

AN EYE TOWARD THE FUTURE

COLLINS REFLECTS ON 30 YEARS ON FOUNDATION BOARD





If you ask Jeff Collins, Laramie County Community College makes Cheyenne stand out among other mid-sized urban areas in the Mountain West.

A native of Rawlins, Collins has been a stalwart member of the LCCC Foundation Board since 1995, contributing significantly to the growth and development of the college. Collins, who holds an education degree from the University of Wyoming, formerly served as a conductor for the Union Pacific Railroad before dedicating himself to fostering education and community development.

When Collins first joined the Foundation Board, he was appointed as a general member, later taking on a crucial role on the development committee. At the time, the primary challenge facing the board was raising awareness about the college and cultivating a positive image while generating interest among potential donors.

“It was a lot of fun to come on the board and meet with all their people and encounter their ideas, views and dreams for the college,” Collins said.

During an early retreat, a lofty goal was set to increase the Foundation’s value five-fold to propel the college forward. Collins vividly recalls that while there was a perception that this would be a challenge, he believed it could be done with some creativity. With a bit of matching money from the state, the initiative gained momentum, leading to tangible results. At the time, the foundation’s total assets hovered around \$1 million, making the target of quintupling it seem ambitious.

When the board accomplished its goal, Collins said he knew LCCC and its dedicated supporters could overcome challenges and meet the needs of the community.

“There were a lot of great people involved that had some great ideas, like getting the Legislature to match our funds when revenue from minerals was doing so well,” he said.

One of the needs Collins said the board needed to help meet was the construction of Blue Hall, LCCC’s second residence hall. The Foundation Board knew it had to help with the planning and development of the all-important resource.

“It was a matter of planting a seed so we could watch an idea grow,” Collins said.

In addition to his role on the board, Collins has been an ambassador for LCCC in his other community roles. Coaching high school football after retiring from the railroad, Collins became a bridge between students and the college. His interactions with students, coupled with his role as a substitute teacher, allowed him to guide young minds toward the opportunities available at LCCC.

There are more than 450 donor scholarships available at LCCC, provided by generous individuals and organizations, giving nearly every type of student the chance to receive extra money for college. This support, Collins said, is one of the most important things the college can do for its students who are attempting to change their lives with the power of inspired learning.

“This money is available for whatever career Pathway they want to choose,” he said. “It’s important to me to make that difference.”

Looking toward the future, Collins emphasizes that the next challenge for LCCC is determined by the community’s needs. He commended LCCC President Dr. Joe Schaffer’s visionary leadership, noting that his ideas spark inspiration within the board. With a diverse group of members, each contributing unique expertise, the Foundation Board remains a dynamic force in steering LCCC’s growth, he said.

Collins acknowledges the collective effort required to build and develop an institution like LCCC. He emphasizes that growth doesn’t happen by chance but through the dedication, hard work and innovative ideas of individuals committed to the cause. Reflecting on the past three decades, Collins marvels at the progress made and expresses confidence in the continued growth of LCCC under the leadership of the community and the board.

“It’s been fascinating over the years to watch board members come and go, making big impacts,” he said. “They’ve left a mark.”

As he looks back on his journey with the Foundation Board, Collins couldn’t have predicted the remarkable growth LCCC has experienced. However, he remains optimistic about the future. With strong leadership and the commitment of the community, LCCC is poised to continue flourishing in multiple directions, embracing the challenges and opportunities that lie ahead. Collins said he’s happy he’s found some ways to make his mark.

THE LEGACY OF VISIONARIES

BOYDS' LEGACY BUILT INTO 50 YEARS OF AG AT LCCC

AS BOB AND ROGENE BOYD walked into the Animal Science Lab just outside the Agriculture Building at Laramie County Community College in Cheyenne, Bob broke from the group and went straight to the sheep in pens against the north wall. His discerning eye inspected each animal as he sidestepped in front of the pens, his experience telling him just by a glance how to evaluate them.

“That’s a good ewe lamb there,” he said. “I’m looking at the size of the bone and thickness of the rib around the heart and lungs.”

The Boyds’ story is rooted in agriculture. Fifty years ago, their passion and vision, along with the work of several other key figures, led to the establishment of an agriculture program at LCCC. Bob’s early years, filled with working alongside and showing sheep nationwide, evolved seamlessly into a career as an educator and innovator that would change southeast Wyoming’s college landscape.

Today, the facility where students take their classes in LCCC’s Ag & Equine Pathway is named the Boyd Agriculture Building, its namesake a small token of gratitude to the people who have made a lasting difference at the college.

Ag & Equine Pathway Coordinator Katie Shockley said the Boyds’ legacy lives on every day in the quality education provided to students looking to make a career in the agriculture industry. “The dedication and leadership by the Boyds and others have been instrumental in fostering a community of learners who are not just academically prepared but also possess the practical skills necessary for success in their careers in the agriculture industry,” Shockley said. “As we continue to build upon the foundation laid by those who came before us, we are reminded of the profound influence they have had on the growth and development of our program.” Building from the ground up.

It wasn’t a long shot that Bob and Rogene would meet. They grew up as neighbors in Illinois farm country, going to the same church. They have largely been inseparable since they started dating in high school.

As a high school student, Bob met the shepherd at the University of Wyoming during a Chicago livestock show. Bob was eventually invited to come to UW as an assistant shepherd with the sheep flock.

“We got married on a Saturday night and we left on a Monday morning for Laramie, Wyoming,” Rogene said with a laugh.

After serving in the U.S. Navy, Bob returned to Laramie to finish his bachelor’s degree. He took a position teaching agriculture at Laramie High School after completing his degree at UW. It wasn’t long, however, before a new opportunity came up at LCCC, which had been established less than a decade earlier. Ag classes had begun in 1973 and the ag proponents were seeking new talent to help build a quality program. In 1975, at the invitation of Bob’s good friend Bob Schliske, the Boyds made the trip over the hill to open a new chapter in the Capitol City.

LCCC’s agriculture programming began in what was then called the A classroom building. Bob’s already established and growing connections with ag-focused educators and students helped him bring quality recruits to the program. The open area that became the site where the first ag building would stand was used to allow high school students to show their livestock. Parents and students always enjoyed the gatherings, and it wasn’t lost on Bob that it was a great way to show off LCCC’s new ag program.

The first ag building opened as the program expanded. Bob and his collaborators started the



LCCC Livestock Show, the livestock sale, the Livestock Judging Team, the Livestock Show Team and more. Growth continued as the decades passed, with new courses offered and new facilities built. To save the program money during the construction of the LCCC Arena and Animal Science Lab, Bob wired the buildings. Throughout his 25 years as an instructor, Bob always sought to provide opportunities for the college and its students to succeed in agriculture education.

Before Bryan Wilson was LCCC's School of Arts & Sciences dean, he was an ag student under Bob. (Wilson went on to be an ag faculty member in the college's ag program before becoming the Arts & Sciences dean.) When looking at ag production in Wyoming, he said one could reasonably ask why the state's southeast corner should be an agriculture education hub. Today, however, Wilson said LCCC's Ag & Equine Pathway is, along with Casper College, the biggest and most robust of Wyoming's community colleges' ag programs.

"This is directly attributed to Bob and his colleagues at the time," Wilson said. "They poured themselves into growing and having a successful ag program where students learned and enjoyed their time. This put LCCC on the map and made it a place students continue to want to come to and great people want to work at."

A LEGACY BEYOND A LIFETIME

When Bob's students heard about his retirement in 2000, they decided they wanted to do something meaningful for the Boyds. A combined financial effort resulted in the establishment of an endowed scholarship, the Robert G. Boyd Excellence in Agriculture Scholarship. Faculty members would work to add to the scholarship, and Bob and Rogene continue to find ways to support it. Today, it is worth more than \$168,000 and is providing more than \$7,000 of support to agriculture students in the 2023-2024 school year.

Rogene spent 30 years as an elementary educator. The Boyds' combined passion for education also led to the establishment of the Robert G. & Rogene Boyd Education Scholarship, supporting students majoring in education.

In 2023, the Boyds were given the Lifetime Heritage Society Award by the LCCC Foundation in recognition of their extraordinary contributions to the college and the larger southeast Wyoming community. During the award ceremony, Rogene made it clear they continue to have high benchmarks for themselves and the community.

"Our goal is to give 100 scholarships to LCCC students in ag and education while we're living," she said. "Each of us can

do a little to make a difference in other people's futures."

Bob's remarks at the award ceremony were all tied to thanking the people who he worked with through the years. Whether he knew or not what he was getting into when he came to Cheyenne in 1975, Bob said he is filled with gratitude for the work his colleagues contributed to building an ag program at LCCC.

"I look back now and can really appreciate the entire LCCC staff for a fantastic career," he said. "We should all honor LCCC administrators, instructors and staff in the dedication to LCCC students."

After 50 years of agricultural studies at LCCC, Bob and Rogene continue to be familiar figures on campus, attending events and finding ways they can add to their legacy of helping students. For Rogene, that altruistic life's work has been a calling that she and Bob have been privileged to answer.

"Life is a journey, not a guided tour," she said. "Be kind. You never know how long your educational dollars will impact others."

For more information about LCCC's Ag & Equine Pathway, go to lccc.wy.edu/agequine. Go to lccc.wy.edu/scholarships for more information about financial opportunities at LCCC.

Bob and Rogene Boyd are seen at the building which bears their namesake on the LCCC Cheyenne campus.

DREAMS FROM SÃO PAULO

BRAZILIAN ATHLETE MAKES NEW LIFE IN U.S., STARTING AT LCCC

From a young age growing up in São Paulo, Brazil, Thalita Portela dreamed of living in the United States. Laramie County Community College and its soccer program helped her realize that dream.

Portela started playing soccer early in her life, playing street games, largely with boys. In 2009, she first went to an academy to play soccer, though it was an all-boys school.

Beginning her development as a player competing with boys made her a strong competitor, Portela said.

“I feel like it made me a little mentally stronger, because, of course, there are the comments that you have to hear and they are not nice,” she said. “I think it also had a huge impact on my technical skills.”

The conditions in Brazil growing up were far from ideal, Portela said. In terms of social conditions, Brazil struggles with high levels of income inequality, crime and violence, particularly in its urban centers. The country’s education system is also facing challenges, with limited access to quality education for many citizens.

Economically, Brazil faces several structural challenges, including a high tax burden, complex regulations and corruption. The country also has a large informal economy, with many workers operating outside the formal sector and without access to social protections like health care and

pensions. Unemployment and underemployment remain significant issues, with many Brazilians working in low-wage jobs without job security or benefits.

“Those were major factors, I never wanted to live in the country since I was a kid,” Portela said. “I always studied a lot and I knew the reality of my country. I guess you could say I wanted to run away somehow. But really I just wanted to look for better conditions.”

Then, in 2012, Portela went to a girls academy where the goal was to become a professional soccer player. Continuing her development not only as a player, but also her academics and English skills, she graduated from high school at 17.

Portela went to one year of college in Brazil, studying nutrition. But her life would take on a dramatic new path when she was recruited by LCCC interim women’s soccer coach Jim Gardner to come to Cheyenne.

Moving across the world to a landlocked community in the least-populated state in the U.S. had its challenges, Portela said. The food took some getting used to, and the pace of English-speaking caught her off-guard at times. But with the support of her teammates, coach, faculty and staff at LCCC, Portela said she found her footing.

Whether it was in the classroom, on the soccer field, in her job in the dining hall or outside of campus, Portela said she was a social butterfly who loved meeting new people.

“I feel like it was the perfect fit for me,” she said.

Balancing her commitments as team captain and academics was also a tall order at times. Whenever she needed help from instructors or staff, however, Portela said she was never left hanging at LCCC.

// I ALWAYS FELT WELCOMED BY PEOPLE — EVERYONE WAS VERY NICE, SHE SAID. //

Portela said she, too, was happy with her two seasons on the field. Always a competitive bunch, she said it’s likely her team only fell short of the national championship during her sophomore season because of a teammate’s injury.

“I will always say this: If we had our full team during nationals, we would have won the whole championship,” Portela said.

In the end, she would play 32 games as a Golden Eagle, stacking up five goals and chipping in six assists.

After graduating with honors from LCCC with her associate in health sciences in Spring 2020, Portela would go on to Shaw University in Raleigh, North Carolina. In December 2022, she graduated with a 4.0 GPA. Upon graduating, Portela was honored by Shaw University as the Female Athlete of the Year, having the highest GPA for bowling and soccer, and also took home the Leadership Award for women’s soccer.

Having obtained her bachelor’s, with a whole world of opportunity in front of her, Portela thought about the connections she’d made in Cheyenne.

“I just feel so welcomed (in Cheyenne),” Portela said. “I feel like I have families everywhere here.

All through my years at LCCC, I never had problems with finding a place to stay over Christmas, or even summer time. I never felt like I was just abandoned.”

Portela started looking for work. She found it, and today, at 23 years old, is working as an exercise physiologist at Cheyenne Regional Medical Center.

Growing up, Portela had respiratory issues. Without the help of health care professionals who attended to her, she knows she never would have realized her dream of playing soccer in the U.S. Being able to work in health care, Portela said, is a way she can repay those who helped her.

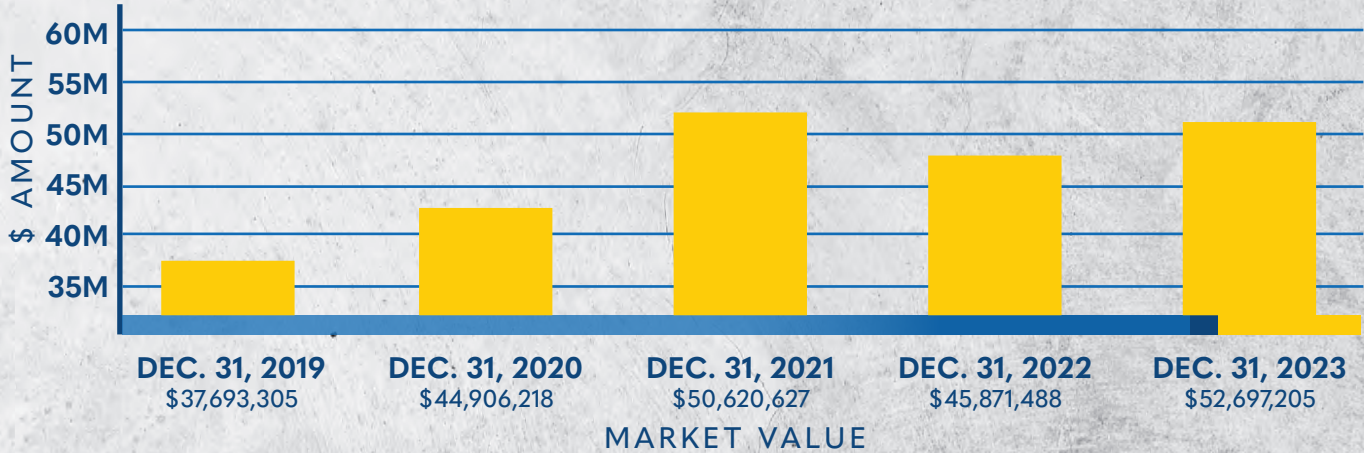
“I wanted to somehow requite those professionals by becoming one of them,” she said.



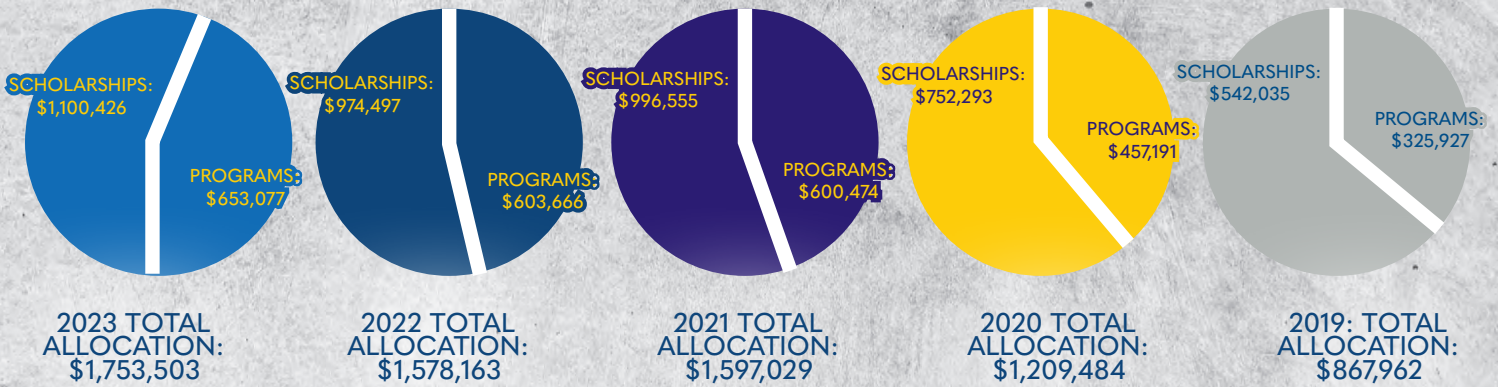
LCCC graduate Thalita Portela is seen at Cheyenne Regional Medical Center, where she works as an exercise physiologist.

FINANCIALS

ENDOWMENT VALUE



TOTAL FUNDS ALLOCATED TO SUPPORT LCCC



475 TOTAL ENDOWED SCHOLARSHIPS



48 TOTAL ENDOWED PROJECTS

NEW ENDOWMENTS IN 2023

BOTH ENDOWED AND WORKING TOWARD ENDOWMENT

- Katharine "Jean" Jeffers Memorial Scholarship
- Blake Wookman Greentail Memorial Scholarship
- Linda L. Kessler Agriculture Scholarship
- Louise Cole PEO Chapter Z Scholarship
- Kirkbride Family Scholarship
- LCCC Residence Hall Scholarship
- Bob Strasheim & Keith Zabka Scholarship
- Wyoming Horse Racing LLC Scholarship
- Austin Humphrey Memorial Scholarship
- Kevin Jo Dager Memorial Scholarship



\$810,368

TOTAL AWARDED TO
LCCC STUDENTS IN
ACADEMIC YEAR
2023-24

524

NUMBER OF STUDENTS WHO
RECEIVED FOUNDATION
SCHOLARSHIP SUPPORT IN
2023-24

463

NUMBER OF LCCC
FOUNDATION
SCHOLARSHIPS
(ENDOWED)

EMPLOYEE GIVING CAMPAIGN



114

Employee Givers
2023-2024

\$56,594

given through Employee Giving
payroll contributions

79

different scholarships
or funds were supported

YEAR-END ANNUAL GIVING CAMPAIGN

**12 DAYS
OF GIVING**

\$104,566

total was donated through
the 12 Days of Giving campaign

74

different scholarships
or funds were supported

DONORS

2023 CONTRIBUTORS

The following individuals, businesses and organizations made financial contributions to the LCCC Foundation in 2023 to support Laramie County Community College, our students and programs.

Anonymous
367th Recruiting Squadron, USAF
#1 Properties
#1 Properties Ranch & Recreation
1st Accounting Solutions, LLC
21st Century Equipment
307 Horse Racing
4M Construction, Inc.
Geoff & Brenda Abbott
Brent & Jessica Acott
Judith N. Acott
Wendy Acott
Tim Adam
[Danielle Adams](#)
Addison Construction Co
Billie Addleman & Brandi Monger
Alco Mobile Storage
Andrew & Michelle Aldrich
Allied Universal
Alpha Delta Kappa, Delta Chapter
Sean Ambrose
American Legion Post 6
American Legion Riders
ANB Bank
Andrew S Jessup Memorial IRR TUA
Anthony G. & Barbara F. Andrikopoulos
Melissa Aragon
[Lugo Arenas](#)
[Lori Arnold](#)
Jeran Artery
Associated General Contractors
of Wyoming
Larry & Connie Atwell
[Dallas Bacon](#)
Bailey Stock Harmon Cottam Lopez, LLP

Hank Bailey
Paula Baldeshwiler
Banner Capital Bank
Jeff & Dershie Barber
[Alexandria Barker](#)
Liberty Barker
Lisa Barnes
Dean Bartow
Rita Basom
Theodore Bastian
Daniel & Cheryl Baxter
Miles & Lisa Beacom
Harry & Patty Beaver
Belmont Stable
Kim Bender
Barbi Berge-Woolsey
[Shauna Best](#)
[Nicole Beumer](#)
Jacques & Angie Beveridge
Bison Storage
Ron Bizak
BJ Carothers Hunting, LLC
[Tim Bjornson](#)
Black Hills Energy Foundation
Black Hills Energy
Susan Blade
Gregg Blikre
Blue Federal Credit Union
Blue Cross Blue Shield of Wyoming
Blue Raven Brewery LLC
Michele & Rich Bolkovatz
Lynne & Rick Boomgaarden
Jason Booth
Boots on the Ground Production
Steve Borin & Dr. Carol Fischer

Names that are in blue denote individuals who are LCCC employees at the time of publication.

[Carole & John Boughton](#)
[Karen Bowen](#)
 Robert G. & Rogene F. Boyd
 Boys & Girls Club of
 Cheyenne
 Breeze Thru Car Wash
 Brewista
 Jeffery Britegam
 Stacy Broda
 Desirée Brothe
 Alicia Brown
[Amanda Brown](#)
 Landon Brown
 Randy Bruns & Donna Martin
 Budd-Falen Law Offices, LLC
 Christopher Bugas
 Vanesa Bullock
 Kevin Burkett
 Burns #47 Order of the
 Eastern Star
 Patricia Burrus
 April Burt
 Albert R. Buss
 Cactus Veterinary
 Services LLC
[Ian Caldon](#)
 Capital Business Systems
 Capital Lumber Company
 Capitol Roofing
 Mike & Terry Carlin
 The Family of Charles
 Carpenter
 Carroll Excavation &
 Repair Inc.
 Martin Carter
 Jan Cartwright
 Casper Chase
 Central Bank & Trust
 Century 21, Bell Real
 Estate
 CFD Volunteer Crisis
 Fund, Inc.
[Sarah Charron](#)
 Janice Cheever
 JJ Chen & Tracie Anne
 Caller
 Cheyenne Engineers Club
 Cheyenne Frontier Days
 Cheyenne Guitar Society
 Cheyenne Skin Clinic
 Camille Christensen
[Jamie Clarke](#)
 Jeff Close
 Julia Cloud
 Louise Cole
 Dave Coleman
 The Collins Family
 Andrea Collins
[Nick Colsch](#)
 Community Foundation for
 Southern Arizona
 The Blessings Fund
 Compass Wealth Group
 Floyd & Bobby Condron
[Abbie Connally](#)
 Kathleen Cook
 Cooking Until the Cows
 Come Home
 James W. Coomes
[Misty Cosseboom-Swainson](#)
 Katy Cotton
 Aaron & Shelly Courtney
[Katie Cover](#)
 Cowboy Dodge Chrysler Jeep
 Ram
 Cowgirls of the West
 Timothy Cowley
 Robert Cowley
 Scott Cowley
 Deborah A. Cox
[Robert & Edie Cox](#)
 Melvin & Mary Kay Crawford
 C.D. Crisp
 CRMC
 Crowley Fleck PLLP
 Bruce & Martie Curl
 Robert W. Dager
 Randall & Jan Dancliff
 Rick & Ibbey Davis
 Davis Elementary PTO
 Linda Davis
 Mr. & Mrs. Donald W. Day Jr.
 David Delicath
[Susan M. Dellos](#)
[Michael & Pam DeMartin](#)
 Doug & Keri Dennison
 Bill & Kathy DeRouchey
[Jen DeRouchey](#)
 Jennifer Julie DeRoulack
 Jerome Deveraux
[D'ann Dickinson](#)
[Bobby & Melissa Dishman](#)
 Shirley Doll
 Double Dollar Cattle
 Company - Saddleback
 Ranch
 Joel & Kelly Douglas
 Matt & Jennifer Dubie
 Ken & Susan Dugas
 Greg Dyekman
 Ernest & Laurie Eason
[Shawn Eby](#)
[Dustin Eicke](#)
 El Dorado Holdings Inc WC
 Eldred Eye Center
 David & Linda Eldred
 Arthur & Cathy Ellis
 Senator Fred Emerich &
 Mrs. Keren Meister-Emerich
 Neil & Kay Emmons
 Equality State Chapter Nat'l
 Soc Colonial Dames XVII
 Century
 Terri Erdmann
 Don & Jacqui Erickson
 Sarah E. Erickson
 Wallace & Kristine Erickson
 Benjamin Escobedo
[Bernadette Espinoza](#)
[Justine Essex](#)
 Jerod Evans
[Rick Evelo](#)
 Tucker & Carol Fagan
 John Fagerberg
[Chelsea Felton](#)
[Auri Fermelia](#)
 Sarah Ferrari
 Daniel & Christine Fetzer
[Stephanie Fiedler Gleich](#)
[Dean Finnerty](#)
 First Education Federal
 Credit Union
 First Interstate BancSystem
 Foundation
 First Interstate Wealth
 Management
 Leah Fisk
 Todd & Deby Forry
 Forum 619
 Scott & Megan Fox
 Patricia Franklin
 Bryce & Pamela Freeman
[Lindsey Freeman](#)
 Freudenthal Law Office, LLC
 Frontier Medical Providers
 Frontier Veterinary Clinic
 Daniel & Kandi Furphy
 Dan & Rhonda Gallagher
 Kris & Mike Gallagher
 Terrence Gallagher
 Terry Gallagher Jr.
[Melissa Gallant](#)
 Jeffrey & Patty Gardner
 Tom & Lori Garrison
 Natacha Gaspar
 Gatchell Family Foundation
 GFWC X-JWC General
 Federation of Women's
 Clubs
 GH Phipps Wyoming LLC
[Vince & Katie Gibson](#)
[Darla Giordano](#)
 Seth & Jayme Glause
 Tom & Terri Glause
[Christie Goertel](#)
 Dustin Goettsch
[Justin & Sabrina Gorman](#)
 Laura & James Gorman
 Mike & Becky Grant
 Greater Cheyenne Chamber
 of Commerce
 Shirley Greer
 Jeri & David Griego
 Troy & Casey Griffith
 Marlene Griffith
[Taylor Guerra](#)
 Nellie Guthner
 GW Mechanical, Inc
 Hales Children, LLC
 Dr. Sloan & Anna Marie Hales
 Halladay Auto Group
 Stig & Beth Hallingbye
 Jean & Sarah Halpern
[Rakhshi Hamid](#)
 David Hamilton
 Jeremy & Amanda Hamilton
[Sarah & Josh Hannes](#)
[Kacee Hansen & Joshua
 Thein](#)
 Ron Hansen
[Sheridan & Jared Hanson](#)
 Rosemarie Harding
 Jenny & Eric Hargett
 Mary M. Hart & Daniel C.
 Hart Revocable Trust
 Betty Haselman
[Laura & Matt Hayes](#)
[Kira Heater](#)
[Jennie Hedrick](#)
 Donnie & Heather Heiduck
 Kimmie Heiduck
 Kathleen Heine
 Hell on Wheels Rodeo
 Company, LLC
 Marcy Helser
 Henderson PTA
[Cynthia Henning](#)
[Glenn Herbst & Kari
 Brown-Herbst](#)
[Linda & Scott Herget](#)
 Marguerite Herman
 Liliana Hernandez
 Gabriel Herrera
 Meagan Herrington
 Paul & Jeanne Hickey
[Jenny Himes-Baumgartner](#)
 Hirst Applegate, LLP
 Steve & Amy Hodges

Amber Holen
 Carol Holland
 Home Instead Senior Care
[Jennifer Hooke](#)
 Horam Family Living Trust
 Horse Creek Cattle Company
 David Horton
[Ann Howard](#)
[Steve Hrkach](#)
 Hub International
 Galen Huck
 W. Alan Hughes
 Dennis Humphrey
 Harvey Humphrey
 Mike Humphrey
 Mike & Sheila Ingram
 Jane Iverson
[Bethany Jacobs](#)
 Joe & Carla (Dubie) James
[George Jankowski](#)
 Amy Jaraczski
 Robert & Cathy Jarosh
 Diana Jenkins
 JGibbs Construction, LLC
 J-Heart Equine Services
 Joannides Family Foundation
 John P. Ellbogen Foundation
 BeLynn Johner
 Matt & Val Johnson
 Jonah Bank of Wyoming
 Drs. Grant & Lynda Jones
 Harris Jones
 Michael Jones
 Earl & Carol Kabeiseman
 Kaiser Flooring
[Meghan Kelly](#)
 Nick Kemp
 Bill & Trish Kenagy
 Linda Kessler
 Jess & Kelly Ketcham
 Sidney Kettelkamp
 KIA of Cheyenne
 Donna J. Vande Kieft
 King Ranch Company, L.P.
[Gabriella King](#)
 Lindi Kirkbride
[Jackie Kisinger](#)
 Dale & Linda Kjack
 David Kling
 Casey & Wanda Knake
 Knifong Insurance Agency,
 Inc
[Angela Kortemeier](#)
[Jill Koslosky](#)
 K's Trailer Parts & Service
 LLC
 Meg Kylander
 Lander Llama Company LLC
 Anthony & Brenda Laird
 Gregg & Kim Lamb
 Ryan & Elizabeth Lance
[Stacy Landon](#)
[Michael Lange](#)
 Chris Lanning
 Kendra Lara
 Laramie County Master
 Gardeners
 Laramie GM Auto Center
[Thomas Lear](#)
[Geraldine Lebsack](#)
 Thomas & Kristin Lee
[Benjamin Lehan](#)
[Susie Lemaster](#)
 Landon & Maggie Lembitz
 Lerwick Equipment
 Sandy Lever
 Lew Broyles & Son
 Denise Lif
 Jera & Joshua Likely
 Little America Hotel & Resort
 Longleaf Services Inc
 Sharon Lovercheck
 Randall W. & Yvonne D.
 Ludden
 Christine Lummis
 John & Brenda Lyttle
[Stephanie Maas](#)
[Stacy & Christopher Maestas](#)
 Gunnar Malm & Jessica
 Binning
 Jessica Mangus
 Joseph & Cindy Marek
 Mark Alan Doherty
 Scholarship Fund
 Donna Markley
[Jamie & Jennifer Markus](#)
[Chad Marley](#)
 Rob & Christine Marquardt
 Ryan Marshall
[Melissa & Brian Martin](#)
 Valerie Martin
 Mary's Cleaning Services
[Thomas M. & Starla L. Mason](#)
 Kathryn Masters
[Shereen Matheson](#)
 Kathy Mawford
[Dana McCammon](#)
[Justin McCarrel](#)
[Jennifer McCartney](#)
 Tony McCowan
[Alli & Andrew McCown](#)
 Dr. Theodore N. McCoy
 Gavin & Tiffany McGhee
[Jo McGuire](#)
 Pat McGuire
 George & Mary McIlvaine
 Teema J. McIntosh
[Dan McIntosh](#)
 Richard McKee
 McLeod-Cegelski Family
[Ayana McWilliams](#)
 R.C. & Marcia Mead
 John & Lindalu Meadows
 Mechanical Systems Inc.
 John Meier
 Meridian Trust Federal
 Credit Union
 Carol & Arthur Merrell
 Dr. Larry & Vicki Parker
 Meuli
 James Mezneke
 MHP, LLP
 Microsoft
 Tanya Mihailov
[James & Krysten Miller](#)
 Miller Insulation Co.
 Barbara Miller
 Susan Mills
 Casey Mills
 Bruce & Gloria Milmont
 Michael Morris
 Ed & Edie Mosher
 Jack Mueller
 Melvin Muldrow
 Caleb Munger
 Erik Mutterer
 Fernando Muzquiz
 Jayne Myrick
 NACCE, Inc
 Derrick & Hadley Nave
[Renee Nelson](#)
 Robert & Charla Nelson
[Amanda Newell](#)
 NextEra Energy Resources
 Gregory Niemuth
[Erin Nitschke](#)
 Charlotte Nolan
 Lisa & Kirk Nordyke
 Northview Medical
 Novus Auto Glass
 Bailey N. Nowak
 Tom & Tammy Nowak
[J & Nikole O'Brien](#)
 Phyllis O'Connor
[Charles O'Hara](#)
 Olsen Legal Group LLC
[Nancy Olson](#)
[Danielle & Christopher Opp](#)
 Samantha Ortiz
 Ovations Food Services, LP
 Darwin Pace
 Nancy Paik
[Greg & Erin Palmquist](#)
[Angela Parks](#)
 Douglas Parks
 Bob & Heather Parry
[Laura Patridge](#)
 Patriot Diesel Service
[Brandi Payne Cervera](#)
[Morgan Pennington](#)
 PEO Sisterhood, Chapter AD
[Fernando Perez](#)
[Tracy Perko](#)
[Caleb Perriton](#)
 Suzan & Del Peterson
 Donna Petrille
 Mark Pfenning
 John Phifer
[Carleen Piper](#)
 Platte Valley Bank
 Lonnie & Kathy Ploeger
 Jerry Plumley
 Bill & Cindy Pomeroy
 Matt Pope
 Precision Auto Wash
 of Colorado LLC
 Dr. Robert Prentice
 & Dr. Sandra Surbrugg
[Allen Price](#)
[Rhonda Priest](#)
 Ed & Nancy Prosser
[Mark Puev](#)
 QMEX WYO, LLC
[Mike Randall](#)
 R&B Breakfast Club
 Rabou Farms, Inc.
[Ashleigh Ralls](#)
 Nadine Ramirez
[Amanda Ramsey](#)
 Samuel Rankl
 Debbie Reber
 Michelle & Samuel Reding
 Ralph & Ann Redman
 Family of Helena Reed
 Dorothy Reeves
 Reiman Corp.
 Nancy Reno
 Amy Rezvani
 Amy Riesberg
 Mark Rinne
 Lindsey Rittmueller
 Riverstone Bank
 Gabriele Roads
 James & Kendall Roberts
[Nola Rocha](#)
 Angela Rockwell
 Rocky Mountain Sand
 & Gravel, LLC

Austin Rodemaker
Tamara Rodgers
Frank & Robin Roling
Patrick Romanofski
Jonathan & Caroline Ross
Rotary Club of Cheyenne
Jim Ruby
Pat Rudd
Charlene Rushing
[Jess & Danielle Ryan](#)
Bob & Lorraine Salazar
Doug & Susan Samuelson
Rafael San Juan
[DeWayne & Danielle
Saulsberry](#)
Dan Sawyer
[Joe & Brooke Schaffer](#)
Lori & Gary Schoene
Mike Schrinar
Dean & Karen Schroeder
Ursula Schultz
Scooter's Coffee
Scottish Society of SE
Wyoming
Curtis Scribner
Second Baptist Church
[Vickie Segelke](#)
Kathie Selden
[Julie Semlak](#)
[Zachary & Sandra Shaver](#)
Suzanne Shea-Kuno
[Ann Shelby](#)
Shell Oil Company
Foundation
Marianne R. Shenefeft
Marty Lee Shepard
[Jeffrey Shmidl](#)
[Katie Shockley](#)
[Stacy Shultz-Bisset](#)
Berty Siltzer
Silver Sage Ceramic
Simpson Electric Company
Lenora J. Simpson
Marjorie E. Smith
Suzanne Smith
Caleb & Claire Snyder
JoAnn Soto
Wendy Soto
[Caroline Soules](#)
Southeast Wyoming Estate
Planning Council
Southwestern Property Corp.
Michael & Dawn Stanfield
Tamara Stanford
Tiffany Stauffenberg
Mark & Patsy Stege
Mike Stengel

Crystal Stewart
[Beth & Thomas Storer](#)
[Crystal & Marcel Stratton](#)
Dale & Paula Strickland
[Jill Stringer](#)
[Traci Strong](#)
Stults Management dba The
Office Bar & Eatery
Tad A. Stumpf
Tad Stumpf
Kent Sturman
[Dr. Melissa & Billy Stutz](#)
Debra Sullivan
Jeanne Surbrugg
Drs. Joy & Ronald Surdam
[Cortney Sutcliffe](#)
Larry & Kimberlee
Sutherland
[Maggie Swanger](#)
Swede's Roofing
Karsten Sween
Sweetwraps Western Gifts
Taco John's International,
Inc.
Keith & Maryellen Tast
[Clint & Lisa Taylor](#)
Matt Teahan
[Amber Telander](#)
Ezras Tellalian
[Alexa Temte](#)
Texas Roadhouse
The Bank of Baker
Martha Thein
Alice Theobald
Rick & Janine Thompson
Keith Thomson
Kevin Tighe
Buck & Kathleen Tilton
Dr. Thomas V. Toft
Norma Tomlinson
Torrington Vision Clinic P.C.
Town & Country
Supermarket Liquor
Transwest Truck Trailer RV
[Lisa & Shawn Trimble](#)
Tri-State Veterinary Clinic
Trujillo Mineral Land
Services
Two Doors Down
Mary Ann Tyler
Richard & Jennifer Tyner
Tyrrell Auto Centers
Unaccompanied Students
Initiative
Union Pacific Foundation
United States Air Force
Kathleen Urban

Utah State University
Van Aken Performance
Katherine Van Dell
Phillip & Gailene VanHorn
[Scott & Christy VanHorn](#)
[Kathy Vest](#)
Visit Cheyenne
Mrs. Wendy Volk &
Mr. Todd Dereemer
W.E. Dinneen Inc.
Karla Walden
Jeff & Diana Wallace
Walmart
Larry & Patricia Walters
Robert Walters
Wang Ranch LLC
Sam Weinstein
Patty Wells
Westby Edge
Kent & Susan Westedt
Western Ecosystems
Technology, Inc
[Bettina Wheeler](#)
Zack Whicker
William R Dubois III
Revocable Trust
[Ron & Dawn Williams](#)
Kelly & Jack Willmarth
[Bryan & Brittany Wilson](#)
Michael Wilson
Windy Ridge Foundation
Jo Dell & Charles Wing
[Adam & Victoria Winn](#)
John & Pam Winter
Kim & Scot Withers
Wolfe Productions, Inc.
Larry & Jennifer Wolfe
Robert & Karen Womack
Women of the Moose,
Chapter 1133
[Trista Wood](#)
Woodward Charitable Trust
Gaylan & Kathleen Wright
Wyoming Bank & Trust
Wyoming Business Alliance
Wyoming Downs
Wyoming Governor's
Residence Foundation
Wyoming Health Works
Wyoming Hereford Ranch
Wyoming Machinery Co
Wyoming Machinery
Company & Caterpillar
Wyoming Army National
Guard
WyoPrint
Kevin Yarbrough

The Yeoman Family
Vicki & Don Yeoman
[Melanie Young](#)
Martha Ziegler
[Shaun Ziegler](#)

HELPING STUDENTS SOAR HIGHER

EMPLOYEE GIVING AT LCCC CHANGES LIVES

At Laramie County Community College, the dedication of faculty and staff to enriching the lives of students extends beyond the classroom. The Employee Giving Campaign exemplifies their unwavering commitment to student success, addressing the pivotal challenge of college affordability.

The financial hurdle that impedes many students from pursuing higher education finds a formidable opponent in LCCC's Employee Giving Campaign. Through this initiative, faculty and staff actively contribute to providing vital financial assistance. The campaign allows them to choose specific areas of support, tailoring their impact to directly benefit students.

From bolstering Pathway Scholarships to sustaining existing donor-funded scholarships that span diverse demographics and programs, the Employee Giving Campaign serves as a conduit for targeted generosity. The flexibility of the LCCC Foundation Excellence Fund further ensures that resources can be directed to areas of greatest need, be it scholarships, program requirements, or essential equipment.

Adding a layer of empowerment, the LCCC Foundation facilitates decision-making for contributors, aiding them in identifying scholarships or funds aligned with their interests. Matching Funds, a testament to community collaboration, amplify the impact of individual contributions, effectively doubling the support directed towards endowed funds.

For both new and existing Employee Givers, the incentive to increase monthly payroll deductions brings an added dimension to their philanthropic endeavors. With the LCCC Foundation matching any increase, a simple gesture like augmenting a \$5/month commitment transforms into a more substantial contribution, making a lasting impact on endowed scholarships and programs.

As the Employee Giving Campaign unfolds, it stands as a testament to the collective dedication of LCCC's faculty and staff, fostering a culture where inspired learning not only transforms lives but also breaks down financial barriers to education.

Just ask Ian Caldon, Spanish instructor, and Lori Arnold, Respiratory Therapy Program director.



IAN CALDON

Caldon, a long-time faculty member, helped establish the Pastora San Juan-Cafferty Memorial Scholarship in his grandmother's honor. As a first-generation college student who benefited from financial aid in scholarships in his own academic journey, Caldon said he knows the value of helping students with their financial concerns.

What makes you feel like it's an important initiative to contribute to students' academic journeys by making an employee contribution at LCCC? Plain and simple...the students! When you read the personal statements and the needs and challenges each and every recipient has every year, it's amazing to see how much any contribution helps them in their pursuit of a degree here at LCCC.

How does the Employee Giving Campaign contribute to the overall sense of community at LCCC? It recognizes the needs students have, as well as employees' ability to help out. It doesn't have to be much, but anything and everything can help these students in need, and this is evident in their testimonies.

What advice would you give to colleagues or peers who are considering participating in the Employee Giving Campaign? You don't even necessarily need to start up a scholarship as I did. There are several meaningful scholarships that already exist and, no doubt, in an area of your interest and passion — start there! The smallest donation will make a huge difference!



LORI ARNOLD

As the program director for the developing Respiratory Therapy Program at LCCC, Arnold is newer to LCCC than Caldon. But, like her colleague, she is a first-generation student whose personal experiences inform how she views Employee Giving at the college.

Did you or anyone you care about benefit from scholarships and financial aid while attending college? My eldest son received a full-ride scholarship for first-generation bachelor's degree students. At the time of his scholarship, neither my husband nor myself had a bachelor's degree. He was able to complete his undergraduate program completely financed through scholarships. This opportunity enabled him to move forward and become a doctor of chiropractic medicine. Along with the undergraduate scholarship, he received scholarships to attend chiropractic school. Without the first-generation scholarship offered by that institution, my son would not have been able to achieve his dream of becoming a chiropractor.

How do your life experiences inform your understanding of how important financial support is for students going to college? So often students feel like they cannot accomplish their career dreams without financial assistance. I wish someone would have explained to me the financial opportunities that are available to further education and career opportunities when I was a new graduate out of high school. I know that without financial assistance, I would not be where I am today. After my son received his opportunity to attend college, I decided to pursue my education further and was able to secure aid. I am so grateful for the assistance that I received and that my sons have received.



DEVELOPMENT PRIORITIES:

It is the goal of the Foundation to identify support for a variety of projects, scholarships and purposes for the benefit of LCCC. With so many outstanding opportunities available each year, we work closely with the leadership at LCCC to help the Foundation prioritize our fundraising objectives and goals.

Every two years LCCC outlines a list of Development Priorities for the LCCC Foundation. With each set of priorities, we may see the goals carryover from year to year, or have goals removed and new priorities added. Included below is a list of our current development priorities for January 1, 2023 through December 31, 2025.



PRIORITY #1:
RAISE \$3 MILLION IN SUPPORT OF RECREATION & ATHLETICS COMPLEX (RAC) RENOVATION/EXPANSION

The fundraising priority for the RAC is a carry-over from our 2022 Development Priorities to allow additional time to achieve this goal. Through the generous support of local community members and business partners, the LCCC Foundation completed this fundraising goal in 2023 raising a total of \$3,145,156 to support the renovation and expansion of the Blue Federal Credit Union Recreation & Athletics Complex at LCCC. We look forward to welcoming the college and community to the new facility in the fall of 2024.



PRIORITY #2:
STRENGTHEN LCCC ATHLETICS THROUGH PRIVATE GIVING

Another goal that has been carried over from the previous set of development priorities, the LCCC Foundation continues to work diligently to raise funds to support our athletic programs at LCCC. Through the generous support of many community partners, we have seen our Golden Eagle Athletic Scholarship grow from \$360,000 in 2019 to more than \$802,000 by the end of 2023. In addition to the support we have received for the Golden Eagle Athletic Scholarship we have seen our Flight Crew memberships

and corporate partners increase substantially in the past couple years, due largely to the support of our Golden Eagle Club Board. The funds raised through the Flight Crew help to support scholarships and operating expenses.



PRIORITY #3:
LCCC PATHWAY ENDOWMENTS

When the College adopted the Pathways model nearly five years ago, we learned that a general fund of support for each Pathway would be beneficial allowing each Pathway to determine how the funds could be used to best support all the programs and opportunities within a Pathway. Since 2021, we have worked to establish and grow 8 Pathway Endowments. Our goal is to have a \$1 million endowment for each Pathway that can be used to support scholarships, programmatic expenses (i.e. equipment replacement and purchases), match grants, provide experiential learning opportunities for students and more. Today all 8 Pathways have established endowments at various funding levels ranging from \$10,000 to more than \$500,000.



PRIORITY #4:
SUPPORTING EARLY CHILDHOOD EDUCATION THROUGH THE CDC

At LCCC we are excited to have learning opportunities at all ages, including our youngest students in our Children's Discovery Center (CDC). With a growing

need to have affordable quality early childhood education/preschool in our community LCCC is looking for opportunities to help advance the work we do in the CDC. We are working to provide more resources through private giving that will grow the Paula and Dale Strickland and Family Endowment, providing additional unrestricted operating funds along with establishing a scholarship fund focused on aiding with tuition costs for LCCC students or working families identified as low-income.



PRIORITY #5:
SCHOLARSHIPS OR SUPPORT FOR STUDENTS LIVING IN THE LCCC RESIDENCE HALLS

LCCC is fortunate to have a diverse series of residence halls on our Cheyenne campus. Yet we recognize that for some students the costs associated with living on campus are considerable. The LCCC Foundation is focused on developing a fund(s) that would help offset the cost of living on campus (room and board) for second year students who had previously lived on campus supporting students from our service area and working with first-generation and low-income students. In 2023, we were able to establish this endowment and will continue to work to grow the principal of this fund to reduce the barriers of living on campus.



THE CULTURAL SERIES: BRIDGING WORLDS AT LCCC

The LCCC community cherishes the power of expression and embraces a diverse range of voices. Through the Cultural and Community Enrichment Series, LCCC provides compelling opportunities for students and the wider public to engage with and glean insights from artists, authors, business leaders, historians, philosophers, musicians, scientists, photographers, poets, and other experts. These annual events, generously funded by donors, are open to the public, fostering a rich exchange of ideas and experiences.

The Cultural & Community Enrichment Series operates under a philanthropic framework, wherein each associated name represents a single donation or a pool of donations held in an interest-bearing account by the LCCC Foundation. This account serves a specific purpose determined by the donors. Importantly, the donation portion of the fund (the corpus) remains untouched, and additional contributions are simply added to it. Annually, a portion of the interest earned becomes available for expenditure. The LCCC Foundation Board of Directors allocates 4% of the fund's corpus for spending each year.

ANB BANK PERFORMING ARTS SERIES

The ANB Bank Performing Arts Series has brought on-stage performances to LCCC and the Cheyenne community that provide cultural entertainment.

BMO MUSIC SERIES

The BMO Music Series was designed to bring culturally diverse musical groups and performers into the Cheyenne community and to the LCCC campus.

CLAY WATERCOLOR WORKSHOP

The Clay Watercolor Workshop was designed to fund an annual week-long watercolor workshop on the LCCC campus that features a nationally or internationally renowned artist in water media,

and includes a gallery show, reception and a public demonstration.

ED & CAREN MURRAY ART SERIES

The Ed & Caren Murray Art Series hosts high-quality, nationally known artists in visual arts for workshops, lectures and shows.

FIRST INTERSTATE BANK — PROGRESS & PROSPERITY COMMUNITY CONVERSATION SERIES

The First Interstate Bank Progress and Prosperity Community Conversation Series was established to provide opportunities for LCCC to present workshops and presenters based on community issues that involve local leaders, residents and the LCCC campus.

GERALD & JESSIE CHAMBERS SPEAKERS SERIES

The Gerald & Jessie Chambers Speakers Series selects speakers who will be culturally diverse and deal with topics relevant to the community's present, past and future.

LITERARY CONNECTION

The Literary Connection was established to bring together writers and readers of literature in an informal yet inviting environment.

THE DINNEEN WRITER SERIES

The Dinneen Writer Series was conceived to enrich the Cheyenne community and the LCCC campus by featuring culturally diverse authors and writers.

UNION PACIFIC BUSINESS & INDUSTRY SERIES

The Union Pacific Business & Industry Series is dedicated to raising awareness of the pertinent issues affecting the business community in Cheyenne, while also addressing needs of students preparing to enter the business environment.

Author Elizabeth Smart visited LCCC in April as part of the Dinneen Writer's Series | True crime writer Ron Franscell, pictured, was joined by crime novelist Christine Carbo for the 2022 Literary Connection | Renowned artist, animator, publisher and graphic novelist Jason Brubaker came to LCCC in September 2022 for a multi-day visit to work with students as part of the Union Pacific Business & Industry Series



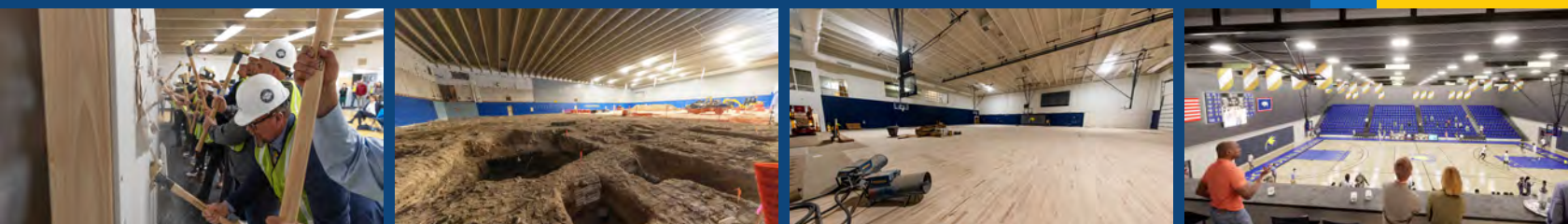
WELCOME HOME GOLDEN EAGLES

When we began our fundraising efforts for the RAC a few years ago, this was one of the largest private fundraising efforts of the LCCC Foundation for a single project. We were pleased to help support the College in their efforts to improve one of our oldest buildings on campus and a building that has seen very few improvements over the years. With the support of our project partners we have been able to support a monumental change within this facility and provide a high quality recreation and athletics facility for our students, our employees and our community. When you enter the Blue RAC this fall, you will see:

- A new competition gym
- An improved and expanded weights and cardio fitness area
- A larger aerobic room
- More natural light
- Additional locker rooms
- And much more

Thank you to all the partners helping to make this project a reality, and welcome home Golden Eagles!

Wyoming Legislature
Blue Federal Credit Union
Billie Addleman and Brandi Monger
Black Hills Energy
Harmon (Bud) and Claire Davis
Dave and Linda Eldred
Wally and Kris Erickson
Ken Garff Toyota Cheyenne
Edward (Eddie) and Deede Georges
Jonah Bank of Wyoming
Sata Kikuchi
Carol and Art Merrell
Pepsi-Cola of Cheyenne
Platte Valley Bank
Bill and Cindy Pomeroy
Debbie Reber
Bob Prentice and Sandra Surbrugg
Riverstone Bank
Dale and Paula Strickland
Town & Country Supermarket Liquors
Robert Walters
Robert and Karen Womack
Wyoming Bank & Trust

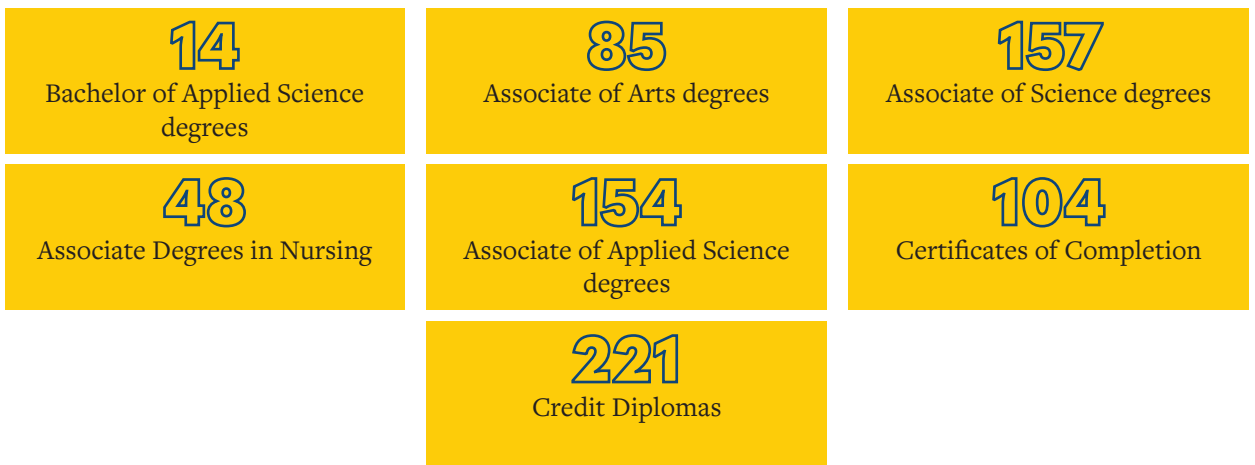




BY THE NUMBERS

DEGREES AND CERTIFICATES

LCCC awarded 783 degrees and certificates during the 2022-2023 academic year.



LCCC BY THE NUMBERS FOR 2022-2023



COMPLETED CREDITS

- 5,328 Unduplicated headcount enrollment
- 82% For-credit enrollments successfully completed by students
- 2,924 Duplicated registrations in workforce training, with 2,742 in Laramie County and 182 in Albany County
- 1,940 Duplicated registrations in life enrichment training, with 1,838 in Laramie County and 102 in Albany County
- 574 Duplicated registrations in adult education training, with 479 in Laramie County and 95 in Albany County
- 32 Clubs and teams, including NJCAA men's and women's basketball, esports, women's volleyball, men's and women's soccer, and rodeo and equestrian show teams
- \$70,844,840 Annual operating budget

FOUNDATION

The Foundation is dedicated to providing services and assistance to students, faculty, staff and the community, thereby enhancing a sense of tradition and pride in the college. Though it is separate from the college, the Foundation works closely with the college to generate private gifts for the college's major fund-raising priorities. In addition to raising money effectively, the Foundation provides careful management of funds already raised.



LISA TRIMBLE
Vice President,
Advancement
lisatrimble@lccc.wy.edu
307.432.1603



JUSTIN GORMAN
Development Officer,
Scholarships & Annual Giving
jgorman@lccc.wy.edu
307.778.1372



KATIE COVER
Development Officer,
Event Coordination
kcover@lccc.wy.edu
307.778.1110



TRISTA WOOD
Director, Accounting
twood@lccc.wy.edu
307.432.1600



ARIEL IVANOFF
Executive Administrative
Assistant
aivanoff@lccc.wy.edu
307.778.1285

Nonprofit Org.
U.S. Postage
PAID
LCCC



**LARAMIE COUNTY
COMMUNITY COLLEGE**
FOUNDATION

1400 E. College Drive, FA100
Cheyenne, WY 82007
307.778.1285
office@lcccfoundation.edu

