



# LCCC Major and Career Guide: Education

Do you want to inspire the next generation? The Education Program develops competent, highly reflective educators who understand how diverse learners grow and develop, who integrate current research into teaching practice, who apply effective assessment and instructional strategies, and who demonstrate personal responsibility in the profession.

## Questions to Consider

- Are you passionate about helping others grow and develop?
- Do you like working with children? What age groups interest you the most: Early Childhood (pre-school) / Elementary Education (K-6th grade) / Education (7th-12th grade)
- Are you comfortable presenting to groups?
- Do you have a creative interest? Can you think of new ways to explain complex concepts?
- Are you passionate about learning?
- Do you enjoy teaching others how to do something?
- Are you adaptable? Can you handle disruptions and provide a positive classroom environment?
- Are you comfortable working additional hours to complete grading and plan lessons?

## Making the Most of Your Academic Experience

### Academics – Tips for Success

- Take an active role in your academics (getting good grades, attending class, and engaging in classroom discussion)
- Get to know your faculty (make a point to stop by during their office hours)
- Ask good questions
- Use your professional associations to learn more about the field such as the Association of American Educators or the National Association for the Education of Young Children
- Take advantage of opportunities to get in the field (volunteer, tutor, observations, practicum)
- Explore under-represented areas such as STEM (Science, Math, Engineering, and Technology) subjects and Special Education

## Leadership, Internships, and Networking

**Get involved- Be a leader on campus by joining a student organization.**

Examples: Rotaract Club; Phi Theta Kappa; Student Government Association Campus Activities Board; or Residence Hall Council; Gear-up

**Volunteering for education related experiences will enhance your knowledge of the field while giving back to the community.**

**Talking to people in the field about their experiences allows you to gain perspective about day to day responsibilities and increases your professional network.**

Informational Interviewing 101- Resource [lccc.wy.edu/Documents/Services/Career\\_Center/Informational%20Interviewing%20101.pdf](http://lccc.wy.edu/Documents/Services/Career_Center/Informational%20Interviewing%20101.pdf)



## Interests

**Social** - Enjoy helping others grow and develop

**Artistic** - Enjoy creativity and self-expression

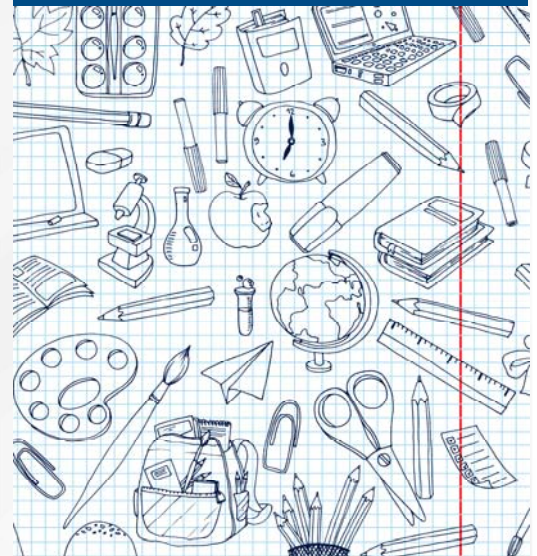
**Investigative** - Enjoy problem solving, analyzing, and researching

## Skills

Effective Communication

Curriculum Development

Critical Thinking and Problem Solving



## ➤ Part-time opportunities and internships

- Work specifically in educational settings such as summer camps, after-school programs, children’s museums, early childhood settings, babysitting, nanny, tutoring and recreation.
- Think about the transferable skills that you need to work in the education industry and choose part-time employment that will enable you to gain experience in those areas.
- To search for part-time jobs go to the LCCC Career Center Online Resource Library [lccc.wy.edu/services/careerCenter/Resource-Library.aspx](http://lccc.wy.edu/services/careerCenter/Resource-Library.aspx) (Search Topic: Job Search and Industry Cluster: Arts, Education and Training, Human Services, Social Science and Humanities or STEM) and/or College Central Network.

## ➤ Sample Occupations

(Certificate (C), Associate (AA), Bachelor (BA), and Beyond)

- |                                   |  |
|-----------------------------------|--|
| Agriculture Extension Agents (BA) | Paraprofessionals (AA)                                   |
| Camp Counselors (C, AA or BA)     | Principal (MA and Beyond)                                |
| Career/Technical Education (BA)   | Preschool Teachers                                       |
| Coaches (AA and BA)               | Special Education Teachers (BA and MA)                   |
| College Faculty (MA and Beyond)   | Substitute Teachers (AA and BA)                          |
| Directors (BA, MA, and Beyond)    | Teachers, Middle School and Secondary School (BA and MA) |
| Elementary Teachers (BA and MA)   | Tutors (AA and BA)                                       |
| Guidance Counselors (MA)          |  |
| Librarians (MA)                   |  |

## ➤ Sample Work Settings

- |                           |                     |
|---------------------------|---------------------|
| Camps                     | Libraries           |
| Colleges and Universities | Montessori Schools  |
| Department of Recreation  | Non-Profit Agencies |
| Government Agencies       | Online Education    |
| K-12 Public Schools       | Pre-Schools         |



## ➤ Additional Resources

LCCC Education and Early Childhood Education Department Website: [lccc.wy.edu/programs/education/index.aspx](http://lccc.wy.edu/programs/education/index.aspx)  
 LCCC Academic Advising: [lccc.wy.edu/academics/services/advising/index.aspx](http://lccc.wy.edu/academics/services/advising/index.aspx)  
 LCCC Career Center: [lccc.wy.edu/services/careerCenter/index.aspx](http://lccc.wy.edu/services/careerCenter/index.aspx)

## Salary (For more salary information go to [onetonline.org](http://onetonline.org))

Occupation	Median Salary U.S. Yearly	Median Salary Wyoming Yearly	Employment change, 2016-2026, Percentage
Elementary School Teachers, Except Special Education	\$55,800	\$57,770	7.4
Secondary School Teachers, Except Special and Technical Education	\$58,030	\$58,480	7.5
Preschool Teachers	\$28,790	\$28,430	10.5
Assistant Teachers	\$25,410	\$28,830	N/A
Education Administrators, Elementary and Secondary School	\$92,510	\$93,910	7.8
Education Administrators, Preschool and Childcare Center/Program	\$45,790	\$50,790	10.6

Resources used: O\*NET OnLine: [onetonline.org](http://onetonline.org) and *What Can I do with this Major?*: <http://whatcanidowiththismajor.com/major/>  
 Laramie County Community College; Career Center and School of Arts and Humanities  
 1400 E College Drive, Cheyenne WY 82007

LCCC does not discriminate based upon any protected status. Please see [lccc.wy.edu/NDS](http://lccc.wy.edu/NDS).