

**GENERAL NOTES:**

- PROJECT INCLUDES:
- THE SEQUENTIAL REMOVAL OF THE EXISTING BOILER BURNER AND GAS TRAINS FOR BOILERS NO. 2 AND 3.
  - INSTALLATION OF THE NEW BOILER BURNER SYSTEMS INCLUDING NEW DRAFT CONTROL SYSTEM FOR BOILERS NO. 2 AND 3.
  - REPLACEMENT OF BOILER BURNER CONTROLS TO THE CAMPUS CENTRAL BAS WITH NEW CONTROL CONNECTIONS.
  - INSTALLATION OF NEW DRAFT CONTROL SYSTEM FOR EXISTING BOILER NO. 1. INTEGRATE NEW DRAFT CONTROLS INTO THE EXISTING AUTO FLAME BURNER CONTROL SYSTEM AND THE CENTRAL CAMPUS BAS.
  - SEE SPECIFICATIONS FOR ADDITIONAL REQUIREMENTS, PARTICULARLY SECTION 23 0600.

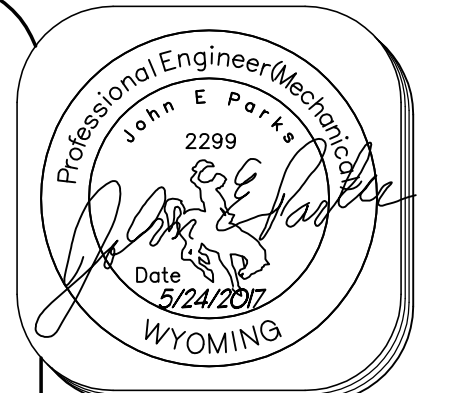
**FLAG NOTES:**

- EXISTING AUTOFLAME BURNER AND GAS TRAIN TO REMAIN.
- REMOVE THE EXISTING KEWANEE MODEL KF 7.5-1162-6 BOILER BURNER AND PREP BOILER TO RECEIVE NEW BURNER. PROVIDE NEW ADAPTER PLATE AND INSTALL NEW BURNER.
- REMOVE EXISTING GAS AND LP VAPOR GAS TRAIN, REPLACE WITH DUAL COMPLETE GAS TRAINS FOR EACH FUEL SOURCE (NATURAL GAS AND LP VAPOR).
- REMOVE EXISTING DRAFT DAMPER. INSTALL NEW DRAFT CONTROL SYSTEM AND DAMPER WITHIN EXISTING BOILER BREACHING.
- EXISTING CAMPUS CENTRAL BAS SYSTEM.
- EXISTING CONTROL PANELS.
- EXISTING POWER MOTOR CONTROL CENTER (MCC).

**ELECTRICAL FLAG NOTES:**

- LOCATE EXISTING BOILERS NO. 2 AND NO. 3 DISCONNECT/STARTER SPACES WITHIN THE MCC'S. FIELD TAKE-OFF EXISTING FUSED SWITCH AND CONTACTOR SIZE AND CAPACITY. REMOVE THE EXISTING CONTACTOR AND RETURN TO OWNER. VERIFY THAT THE FUSE DISCONNECT IS ADEQUATE FOR NEW BOILER BURNER SYSTEM. REPLACE THE MCC "BUCKET" COVER/DOOR WITH A NEW DOOR FOR USE AS A DISCONNECT ONLY. REMOVE EXISTING FUSES (RETURN TO OWNER), CLEAN ALL COMPONENTS, AND DISCONNECT CONTACTS. REMOVE ALL SECONDARY CONDUCTORS TO EXISTING BOILER/BURNER. CHECK AND SWAB ALL EXISTING CONDUITS. TIGHTEN LUGS TO MCC BUSS.
 

INSTALL NEW CONDUCTORS (POWER, GROUND, AND NEUTRAL (IF NEEDED)) TO NEW BOILER/BURNER SYSTEM OF PROPER SIZE AS REQUIRED BY ELECTRICAL CODE. INSTALL NEW PROPERLY SIZED FUSES.
- COORDINATE WITH BOILER BURNER/DRAFT CONTROL SYSTEM TO PROVIDE ALL NEW SECONDARY POWER AND CONTROL WIRING AND CONDUIT FOR CONTROL DEVICES AND SENSORS. ALSO PROVIDE CONDUIT AND CONTROL WIRING FROM EACH BOILER BURNER/DRAFT CONTROL SYSTEM TO INTERFACE BACK TO BUILDING BAS CONTROL PANEL(S).



REVISIONS	
No.	DATE
XX	XX
XX	XX
No.	DATE
No.	DATE
No.	DATE
No.	DATE

**MKK**  
CONSULTING ENGINEERS, INC.  
50 years and counting  
www.mkkeng.com

Mechanical, Electrical & Energy Consultants  
650 West 18th Street, Suite 200  
Cheyenne, WY 82001-4368  
Tel: 307.634.7647  
Fax: 307.638.6064

PROJECT: **LCCC CENTRAL PLANT  
BOILER PLANT  
BURNER REPLACEMENT**

TITLE: **CENTRAL PLANT  
MECHANICAL  
PLAN**

DATE	05-24-17
SCALE	1/4" = 1'-0"
APPROVED BY:	JEP
CHECKED BY:	JEP
DESIGNED BY:	JEP
DRAWN BY:	MAF

PROJECT NO. 2016.02.0022

SHEET NO. **M1**

NORTH

**BOILER PLANT MECHANICAL PIPING**  
SCALE: 1/4" = 1'-0"