

PANEL 'HS'		MAINS: 225 A MLO		ENCL. NEMA 1		REMARKS:	
		VOLTS: 480Y/277V, 3-PH, 4-W		MOUNT. Surface		REPLACE EXISTING 30-SPACE PANEL WITH NEW 42-SPACE PANEL	
		STYLE: GOULD		INT. RATING: 22kAIC			
		OCP: 225 ACB					
Pole	Load Description	Lights (VA)	Recept (VA)	HVAC (VA)	Equip. (VA)	Other (VA)	Pole
1	Xfmr Disconnect						2
3							4
5							6
7	Hot Water Heater West						8
9							10
11							12
13	Heat Vet Area						14
15							16
17							18
19	South Night Lts						20
21	South Lights						22
23	North Lights						24
25	Vet. Area Lts						26
27	Lights East Rooms						28
29	Lights West Rooms						30
31	Outside Lights Via Contactor						32
33	Outside Lights Via Contactor						34
35	Spare						36
37	Spare						38
39	Spare						40
41	Spare						42

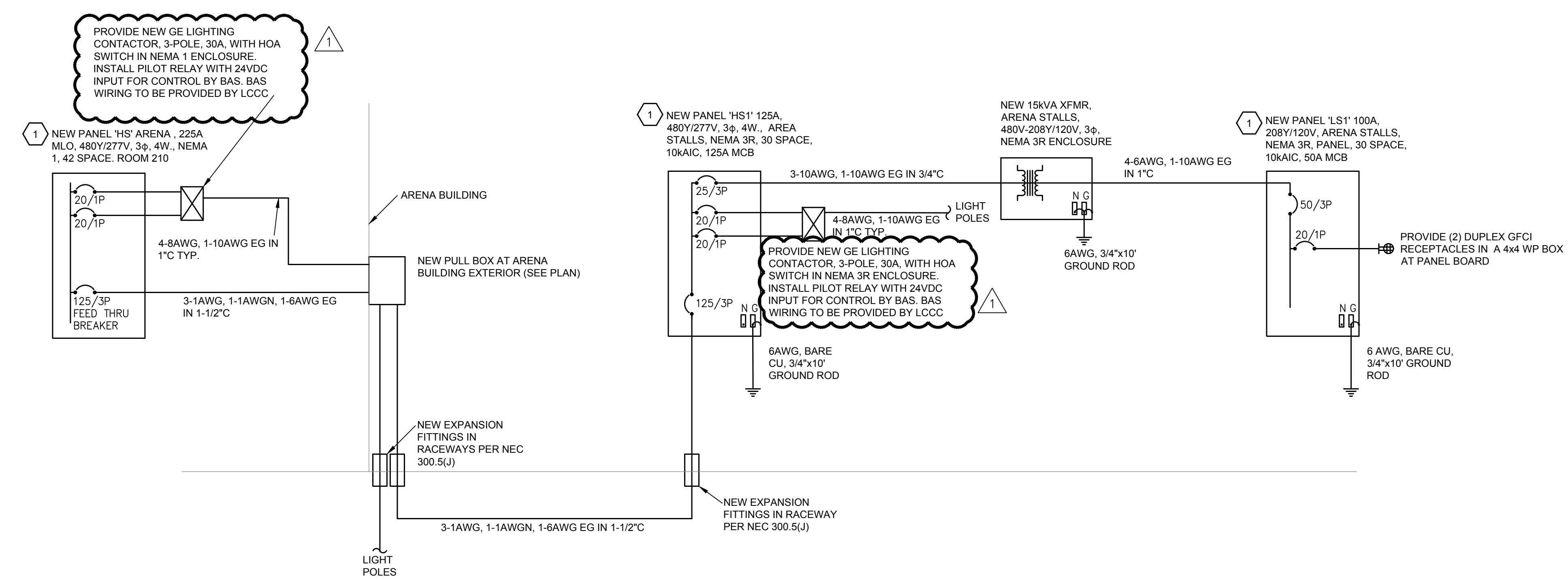
GENERAL NOTES THIS SHEET

- SEE LUMINAIRE SCHEDULE SHEET E101 FOR DESCRIPTIONS OF POLES AND LIGHT FIXTURES.
- SEE SHEET E104 FOR SITE PLAN SHOWING LOCATIONS OF EQUIPMENT ITEMS INDICATED ON THIS SHEET.

FLAG NOTES NOTES THIS SHEET

- NEW PANELS SHALL BE EQUIPPED WITH 20A/1P SPARE CIRCUIT BREAKERS IN ALL UNUSED SPACES.
- PANEL SCHEDULE FOR NEW PANEL 'HS' SHOWS EXISTING LOADS IN SPACES 1 THROUGH 30, AND NEW LOADS. THIS PROJECT IN SPACES 31 THROUGH 42

1 E105 NEW PANEL 'HS'



2 E105 ONELINE DIAGRAM - ARENA



LARAMIE COUNTY COMMUNITY COLLEGE
SITE LIGHTING UPGRADE PROJECT
PHASE II
 1400 E. COLLEGE DRIVE, CHEYENNE, WYOMING

REV.	DATE	ISSUED FOR	APP'D	DVA	CAS	DVA	CAS
0	05/24/16	100% CD					
1	06/09/16	ADDENDUM 1					

SHEET TITLE:
ONELINE DIAGRAM, PANEL SCHEDULE

SCALE: AS SHOWN DWG. No.: **E106**
 7 of 9