

# Core Expenditures

---

KPI G, FISCAL STEWARDSHIP, MEASURES G.1 AND G.2

# Definitions

---

- G.1** Core Expenditures per FTE Student = (total core expenditures)/(annualized FTE from measure A.1.b)
- G.2** Core Expenditures per Completion = (total core expenditures)/(total number of degrees and certificates awarded)

**Core Expenditures** include expenditures for instruction, research, public service, academic support, institutional support, student services, operation and maintenance of plant, depreciation, scholarships and fellowships, other expenditures and non-operating expenditures.

**Time Frame** is FY2009 through FY2014.

# Grading Method

## Grading Criteria

- Max of prior five years
- Min of prior five years
- Average of prior five years
- Benchmark (median of IPEDS peer group)
- Improvement goal
- Aspirational goal (not applicable in this case)

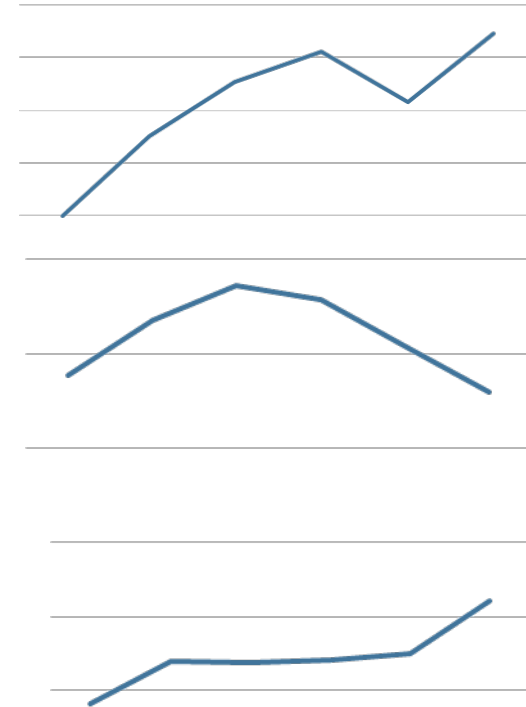
Grade	Reverse Scoring
A	current result < $(\mu - \sigma)$
B	$(\mu - \sigma) \leq$ current result < $\mu$
C	$\mu \leq$ current result < $(\mu + \sigma)$
D	$(\mu + \sigma) \leq$ current result < $(\mu + 2*\sigma)$
F	$(\mu + 2*\sigma) \leq$ current result

Note:  $\mu$  = mean (average) and  $\sigma$  = standard deviation of the grading criteria values.

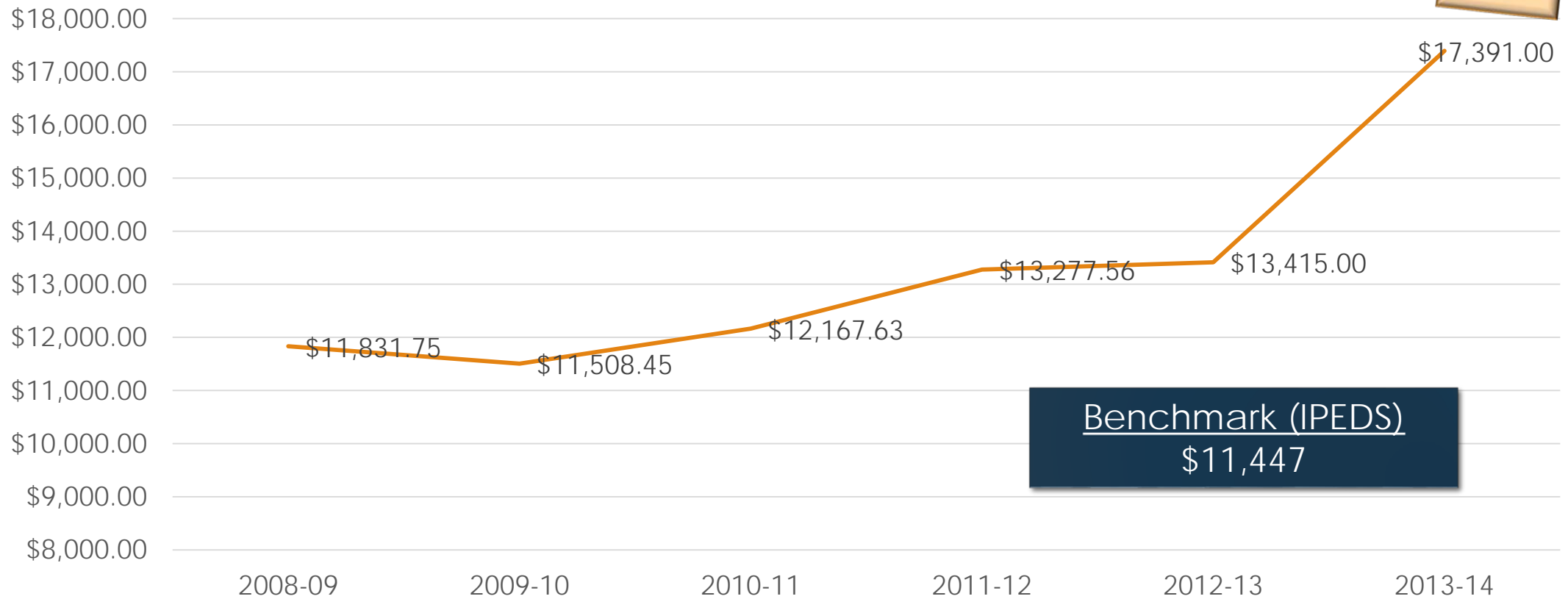
# Some Background

---

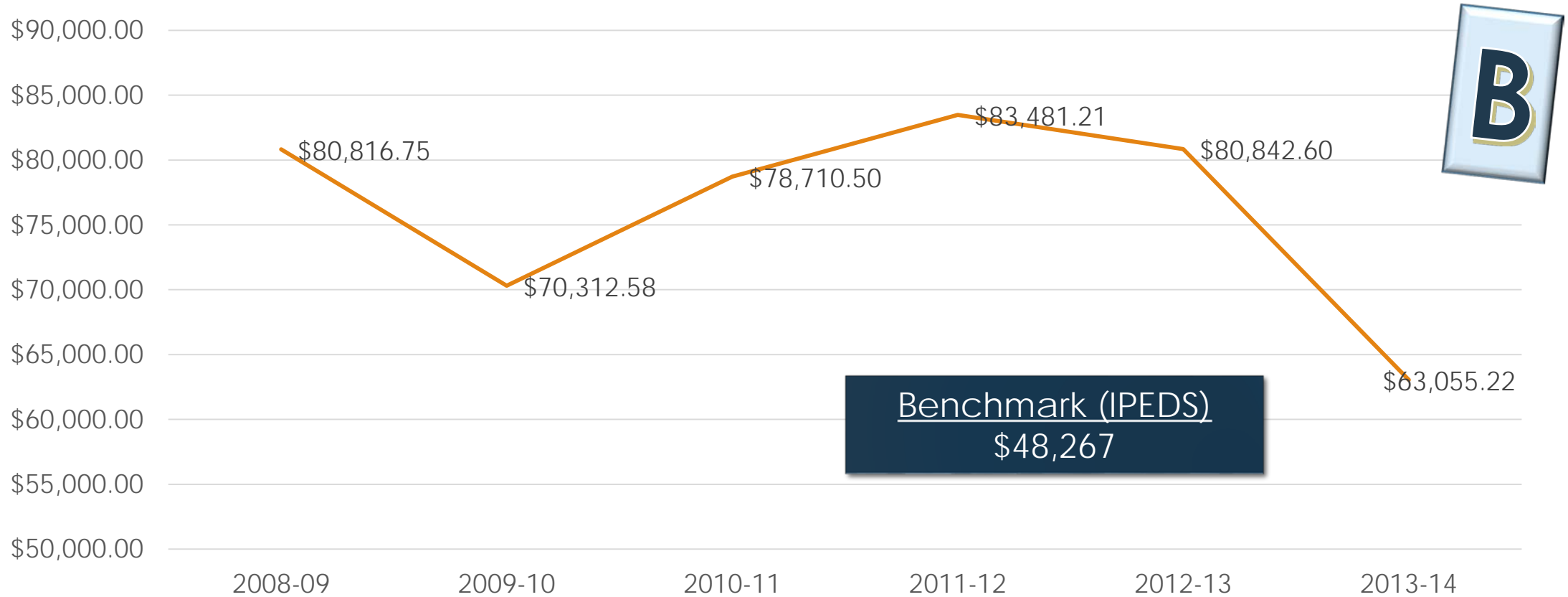
- ❖ From 2008-09 to 2013-14, core expenditures increased by 15.0%
  - From 2012-13 to 2013-14, increased by 5.2%
- ❖ From 2008-09 to 2013-14, FTE decreased by 2.3%
  - From 2012-13 to 2013-14, decreased by 6.1%
- ❖ From 2008-09 to 2013-14, completions increased by 48.9%
  - From 2012-13 to 2013-14, increased by 20.3%



# G.1: Expenditures per FTE



# G.2: Expenditures per Completion



# Improvement Strategies

---

- ❖ Increase completions
  - Already an institutional goal, part of Complete College Wyoming and President Obama's Completion Agenda
- ❖ Increase enrollment
- ❖ Keep expenditures flat
  - Budget approval process requires strong rationale for increases

G. Fiscal Stewardship			B	3.000			3 grade points					
Measure	Description	current result	Grade	Points	trend	2015-16 Goal	5 years prior	4 years prior	3 years prior	2 years prior	prior year	current result
G.1	Core Expenditures per FTE <sup>R</sup>	\$ 17,391.00	D	1		\$ 17,391.00	\$ 11,831.75	\$ 11,508.45	\$ 12,167.63	\$ 13,277.56	\$ 13,415.00	17391
G.2	Core Expenditures per Completion <sup>R</sup>	\$ 63,055.22	B	3		\$ 60,513.40	\$ 80,816.51	\$ 70,312.58	\$ 78,710.50	\$ 83,481.21	\$ 80,843.60	63055.21692
G.3.a	Expenditures in Instruction (as a Percent of Total Core Expenditures) <sup>W</sup>	47.79%	A	4		50.21%	39.53%	42.11%	34.67%	34.35%	45.25%	0.477946066
G.3.b	Expenditures in Instruction, Academic Support, and Student Services (as a Percent of Total Core Expenditures) <sup>W</sup>	69.52%	A	4		72.22%	59.14%	60.85%	54.00%	52.23%	63.74%	0.695156979



G. Fiscal Stewardship														
Measure	Description	5 yr min	5 yr max	5 yr ave	benchmark	improve goal	aspire goal	average	std deviation	scoring	A min	B min	C min	D min
G.1	Core Expenditures per FTE <sup>R</sup>	11508.45	17391.00	13265.23	\$ 11,447	\$ 13,415.00	n/a	\$ 13,405.34	\$ 2,415.50	R	10989.84	13405.34	15820.83	18236.33
G.2	Core Expenditures per Completion <sup>R</sup>	70312.58	83481.21	78832.88	\$ 48,267	\$ 80,843.60	n/a	\$ 72,347.41	\$ 14,337.24	R	\$ 58,010.16	\$ 72,347.41	\$ 86,684.65	\$ 101,021.89
G.3.a	Expenditures in Instruction (as a Percent of Total Core Expenditures) <sup>W</sup>	0.34	0.45	0.39	46.42%	46.79%	50.00%	43.66%	5.78%	W	47.11%	44.22%	41.33%	38.45%
G.3.b	Expenditures in Instruction, Academic Support, and Student Services (as a Percent of Total Core Expenditures) <sup>W</sup>	0.52	0.64	0.58	67.33%	64.43%	70.00%	62.62%	6.49%	W	66.76%	63.51%	60.27%	57.02%

## KPI G Fiscal Stewardship

### Measure G.1: Core Expenditures per FTE Student

#### *Rationale for Inclusion*

As a public institution, the College must practice due diligence in being good fiscal stewards of taxpayer resources. Measuring the average expenditures per student and benchmarking against the College's peers illustrate how well the College is maximizing its resources and maximizing student impact.

#### *Statistic of Interest*

The total annual core expenditures divided by the annualized FTE student enrollment.

#### *Methodology*

Divide the total core expenditures from the audited final budget report by the annualized FTE (Measure A.1.b) from the corresponding year. Core expenditures include expenditures for instruction, research, public service, academic support, institutional support, student services, operation and maintenance of plant, depreciation, scholarships and fellowships, other expenditures and non-operating expenditures.

#### *Frequency of Data Collection*

Annually for the prior year, after the financial audit has been completed.

#### *Benchmark*

This measure is benchmarked against LCCC's IPEDS peer group.

#### *Grading*

Reverse scoring is used for this measure.

### Measure G.2: Core Expenditures per Completion

#### *Rationale for Inclusion*

The College must weigh the relative cost in which it produces graduates or student completions. In an efficient organization, the cost associated with producing an output (in this case completions), should be monitored to assure those individuals investing in education are confident in the way their resources are being utilized to produce a desired outcome.

#### *Statistic of Interest*

The total annual core expenditures divided by the total number of degrees and certificates awarded during the same year.

#### *Methodology*

Divide the total core expenditures from the audited final budget report by the total number of degrees and certificates awarded during the same year. A student who completes multiple programs during the same academic year is counted once for each program completed. For example, a student who earns a certificate in the fall semester and a degree and a certificate in the spring semester is counted as three completions.

#### *Frequency of Data Collection*

Annually for the prior year, after the financial audit has been completed.

#### *Benchmark*

This measure is benchmarked against LCCC's IPEDS peer group.

#### *Grading*

Reverse scoring is used for this measure.